

## Module 10

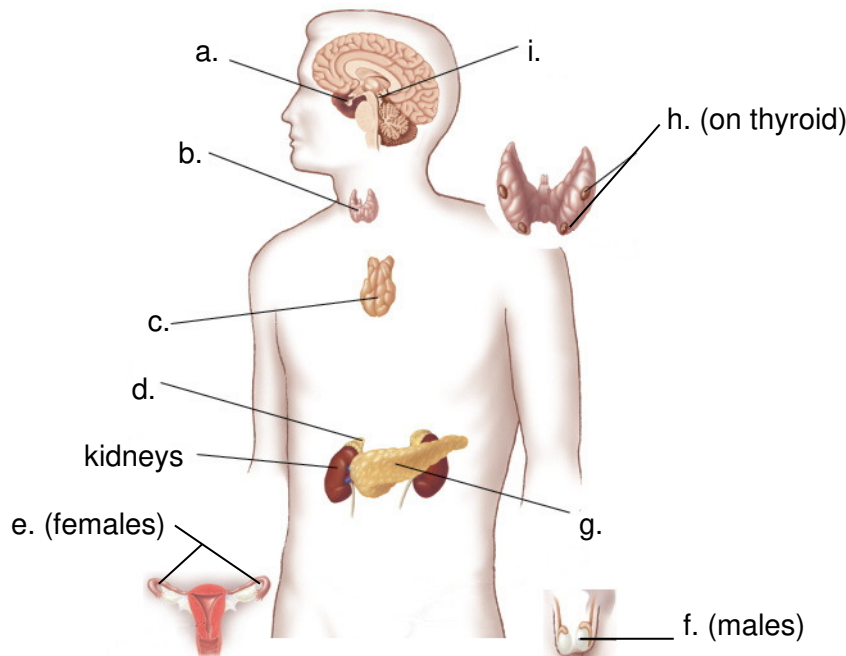
### Assignment #1

A & P

Read pages 293 – 301.

Write the answers on your own paper, not on this sheet.

1. Compare the nervous and endocrine systems in terms of:
  - a. Speed of response
  - b. Duration of influence
  - c. Effectors controlled
  - d. Strength of the signal
  - e. Ability to be repaired
  
2. Identify the glands in the following figure:



3. Make color-coded flash cards for each hormone we've discussed. Use one color for each gland (ex., all hormones from the hypothalamus on blue cards, all hormones from the thyroid on yellow cards). Write the name of the hormone on one side of the card. Write the function of the hormone on the other side.

4. Define the following terms:
  - a. Neurosecretory cells
  - b. Prostaglandins
5. What are the three basic types of hormones?
6. Briefly describe the three ways that secretion of hormones is controlled.
7. List the three patterns of hormone secretion.
8. Which type of hormone stimulates membrane-bound receptors only?
9. Which type of hormone stimulates intracellular hormones only?
10. Which type of hormone stimulates both kinds of receptors?
11. Study the glands and hormones using your color-coded cards.
12. Honors: Below are listed several disorders of the endocrine system. Pick three disorders. Describe the cause and symptoms of each disorder. Be sure to include the name of the endocrine gland that is affected.
  - a. Diabetes insipidus
  - b. Hypothyroidism
  - c. Graves' disease
  - d. Cushing's syndrome
  - e. Addison's disease
  - f. Pheochromocytomas
  - g. Diabetes mellitus